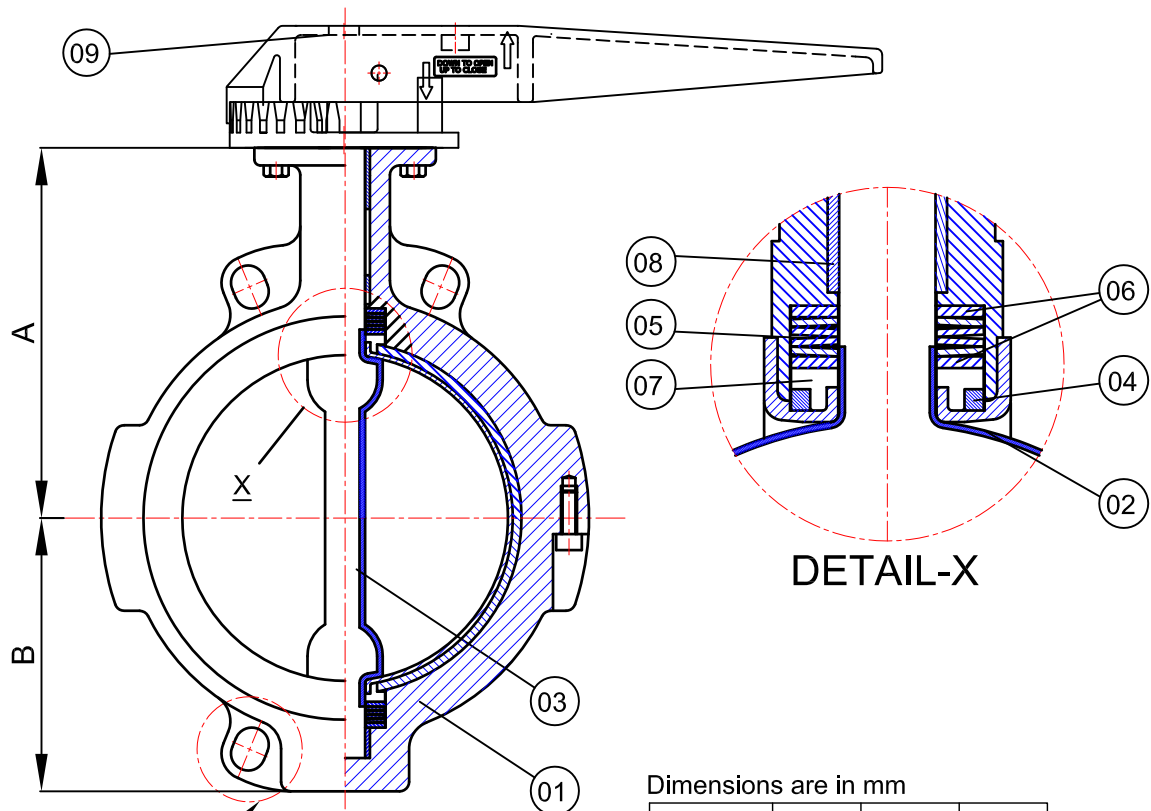


Revision R0



PFA LINED BUTTERFLY VALVE DETAILS :-

WORKING PRESSURE : UP TO 07 kg/cm²
 DESIGN STANDARD : BS EN 593:2004 (FORMERLY BS 5155)
 FACE TO FACE STANDARD : AS PER MANUFACTURING STD.
 MAX. SERVICE TEMP. : PTFE PFA - 200° C
 OPERATION : HANDLE OPERATED

TESTING DETAIL :-

HYDRAULIC TEST PRESSURE:
 VALVE BODY : 10 BAR (G)
 SEAT : 07 BAR (G)

LINING SPECIFICATION

THICKNESS	MIN. 3MM OVER ALL WETTED PARTS
LINING MAT.	PTFE PFA - ASTM D 3307 TYPE II
SERVICE TEMP.	PTFE PFA - MAX. 200° C

No.	DESCRIPTION	MATERIAL
01	BODY	ASTM A126 GR. B
		ASTM A216 GR. WCB
		ASTM A351 GR. CF8 / CF8M / CF3M
		S.G. IRON
02	MUFFLER	PFA / FEP/ PTFE
03	DISC WITH INTEGRAL SHAFT	ASTM A351 GR. CF8 / CF8M / CF3M (FEP / PFA) WITH MOLDING
04	ELASTOMER BACKING	SILICON
05	WEDGE RING	SS304
06	THRUST WASHER	AISI 304
07	SHAFT BUSH	PTFE
08	GUIDE BUSH	AISI 304
09	HANDLE	STANDARD

Dimensions are in mm

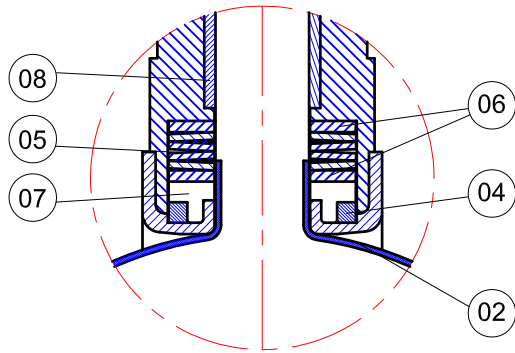
Tolerance	±3mm	±3mm	±3mm
Size	F/F	A	B
50mm	43.3	100	67
65mm	47.5	115.5	67
80mm	46.5	120.5	81
100mm	54	158.7	96
125mm	56.3	168	118
150mm	60	198	119

ON & ABOVE 200 NB.

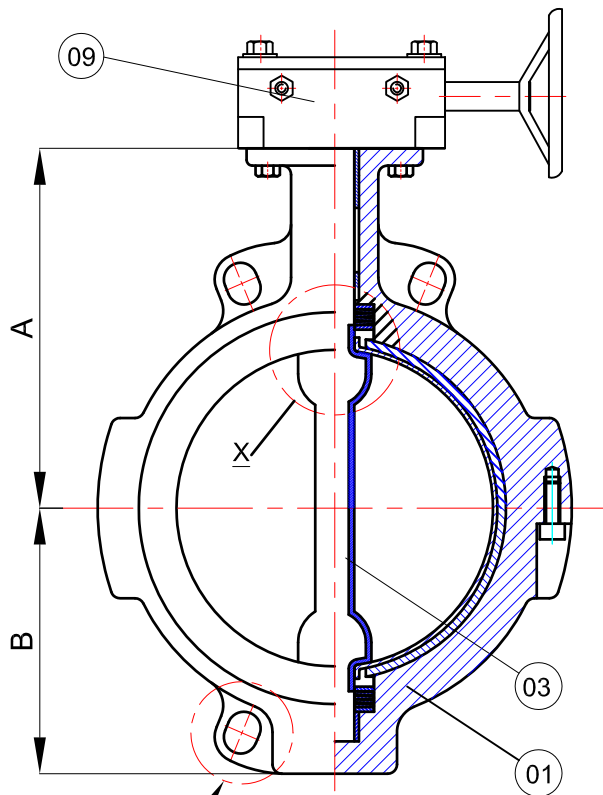
(WE RESERVE THE RIGHT TO CHANGE DESIGN AND TECHNICAL DATA FURNISHED HERE DUE TO CONTINUOUS PRODUCT DEVELOPMENT)

Mfg. By	4Matic	DATE	20/11/19
		TOTAL SHEET	01
TITLE:- DRG. OF 50 TO 150MM HANDLE OPERATED PFA/FEP LINED WAFER TYPE BUTTERFLY VALVE 150#		SHEET NO.	01 OF 01
		DRG.NO.	A4G/BFV/PFA-FEP/WF/GEN/1444/R0

Revision R0



DETAIL-X



ON & ABOVE
200 NB.

PFA LINED BUTTERFLY VALVE DETAILS :-

DESIGN STANDARD : BS EN 593:2004 (FORMERLY BS 5155)
 FACE TO FACE STANDARD : AS PER MANUFACTURING STD.
 WORKING PRESSURE : UP TO 7 kg/cm²
 MAX. SERVICE TEMP. : PFA - 180°C
 OPERATION : GEAR OPERATED

TESTING DETAIL :-

HYDRAULIC TEST PRESSURE:
 VALVE BODY : 10 BAR (G)
 SEAT : 06 BAR (G)

LINING SPECIFICATION	
THICKNESS	MIN. 3MM OVER ALL WETTED PARTS
LINING MAT.	PTFE PFA -ASTM D 3307 TYPE II
SERVICE TEMP.	PTFE PFA - MAX. 180° C

Dimensions are in mm

Tolerance	±3mm	±3mm	±3mm
Size	F/F	A	B
80mm	46.5	120.5	81
100mm	54	158.7	96
125mm	56.3	168	118
150mm	60	198	119
200mm	64	224	165
250mm	74	236	198
300mm	82	270	243
350mm	90	299	260
400mm	104	330	289
450mm	116	395	310
500mm	130	418	340
600mm	154	483	407.5

No.	DESCRIPTION	MATERIAL
01	BODY	ASTM A126 GR. B
		ASTM A216 GR. WCB
		ASTM A351 GR. CF8 / CF8M / CF3M
		S.G. IRON
02	MUFFLER	PFA / FEP/ PTFE
03	DISC WITH INTEGRAL SHAFT	ASTM A351 GR. CF8 / CF8M / CF3M (FEP / PFA) WITH MOLDING
04	ELASTOMER BACKING	SILICON
05	WEDGE RING	AISI 304
06	THRUST WASHER	AISI 304
07	SHAFT BUSH	PTFE
08	GUIDE BUSH	AISI 304
09	GEAR BOX	STANDARD

Mfg. By	4Matic	DATE	21/11/19
		TOTAL SHEET	01
TITLE:- DRG. OF 80 TO 600MM GEAR OPERATED PFA,FEP LINED WAFER TYPE BUTTERFLY VALVE		SHEET NO.	01 OF 01
		DRG.NO.	A4G/BFV/PFA,FEP/GEN/1445/R0